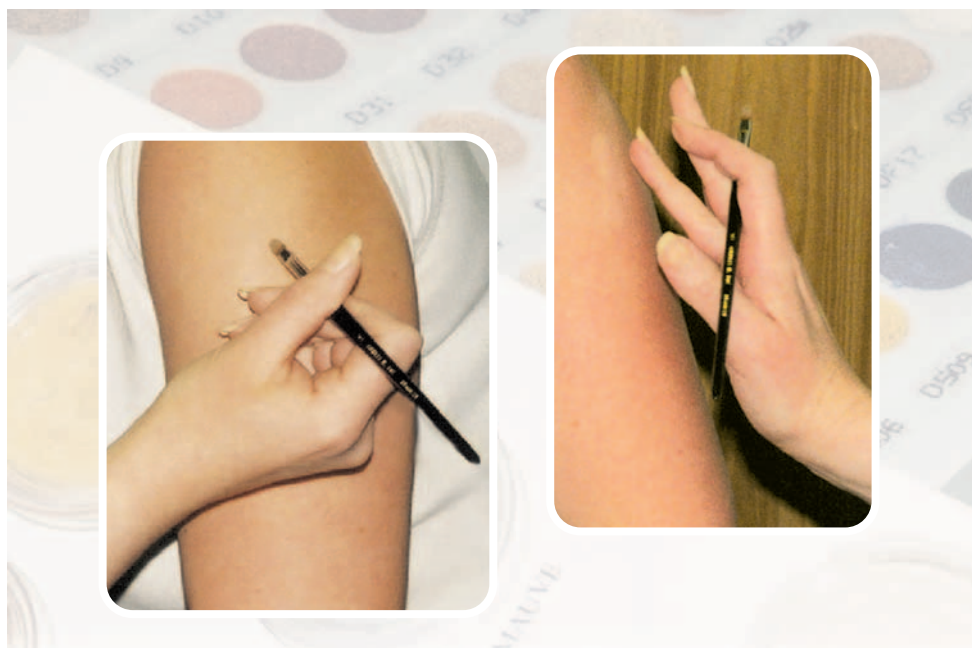


# Cosmetic Camouflage Clinic



## Information for patients

### Pharmacy



## Cosmetic camouflage

Cosmetic camouflage is an effective method of disguising various skin conditions.

These include:

- Surgical scarring
- Burns and skin grafts
- Birth marks / port wine stains
- Dermatological conditions including vitiligo and chloasma
- Radiotherapy scarring and other skin conditions

It may also be used in connection with:

- Prosthetics

## The service provided

The service is available for men, women and children.

You are provided with expert advice and demonstrations on the use of cosmetic creams and powders, to enable you to successfully hide your blemish. The products are waterproof and long lasting. This is followed up with written instructions, advice and help in obtaining the required cosmetic materials.

Cosmetic camouflage can provide you with:

- an increase in self-esteem and confidence
- the possibility of avoiding surgery
- more freedom in dress and activities
- a better quality of life

## Strawberry Naevus (birthmark)

Before and after



## Keloid Scar

Before and after



**The service is available on referral from a General Practitioner**  
**Consultations are made by appointment**

Please contact:

**Mrs Helen A Fletcher**

Deputy Dispensary Manager / Cosmetic Camouflage

**Cosmetic Camouflage Clinic**

Pharmacy Department

Sheffield Teaching Hospitals NHS Foundation Trust

Northern General Hospital

Herries Road

Sheffield S5 7AU

Email: **[helen.fletcher26@nhs.net](mailto:helen.fletcher26@nhs.net)**

Telephone: **0114 271 5544 / 271 5457**



**Sheffield  
Hospitals  
Charity**

To help support your local hospitals visit  
**[sheffieldhospitalscharity.org.uk](http://sheffieldhospitalscharity.org.uk)**

Registered Charity No. 1165762



**Yes I donate**  
ORGAN DONATION

**Alternative formats can be available on request.**  
**Please email: [sth.alternativeformats@nhs.net](mailto:sth.alternativeformats@nhs.net)**

© **Sheffield Teaching Hospitals NHS Foundation Trust 2020**

Re-use of all or any part of this document is governed by copyright and the "Re-use of Public Sector Information Regulations 2005" SI 2005 No. 1515. Information on re-use can be obtained from the Information Governance Department, Sheffield Teaching Hospitals. Email [sth.infogov@nhs.net](mailto:sth.infogov@nhs.net)